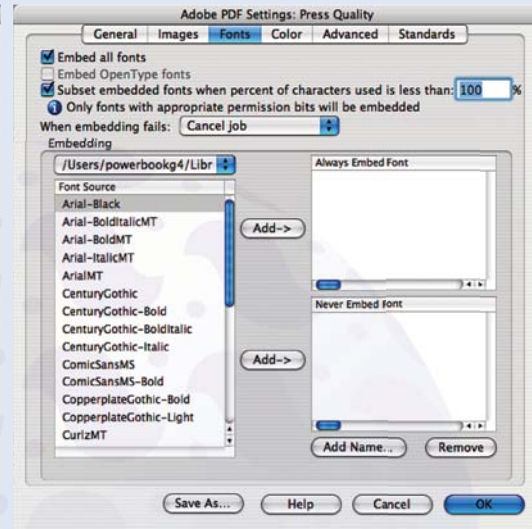
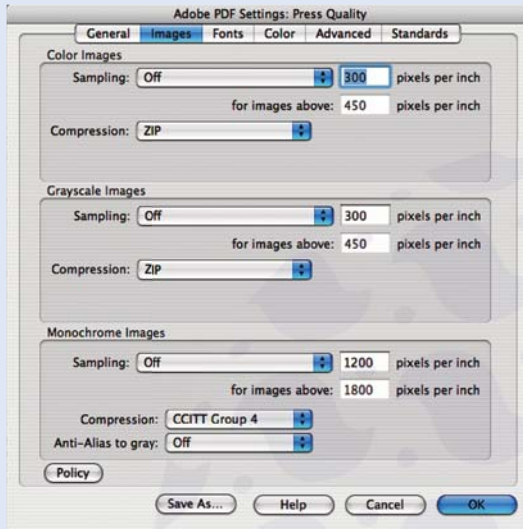
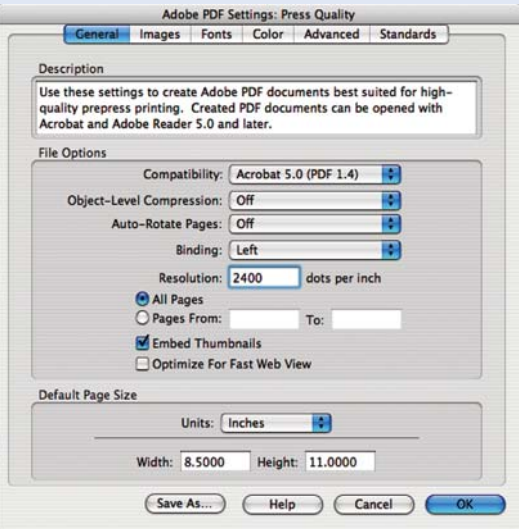


Acrobat Distiller Setting

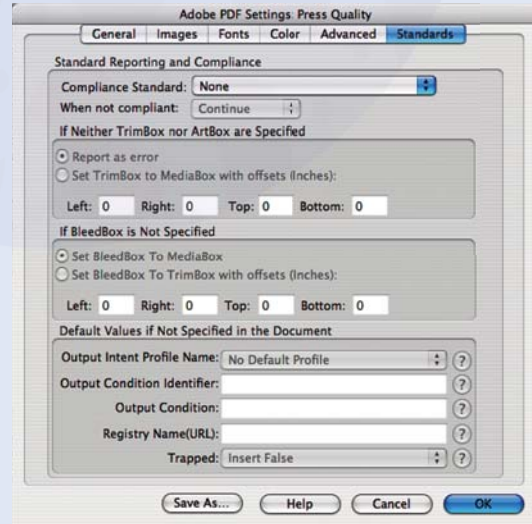
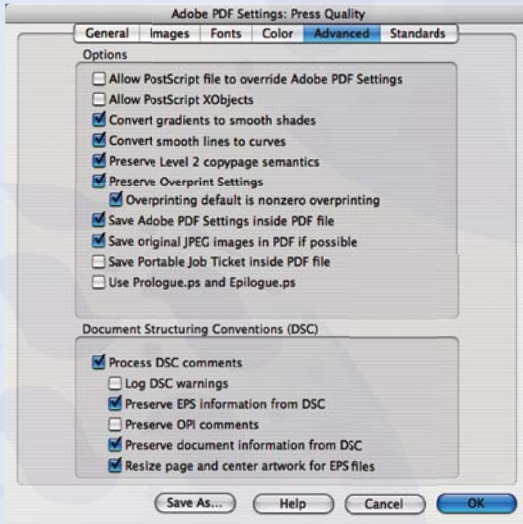
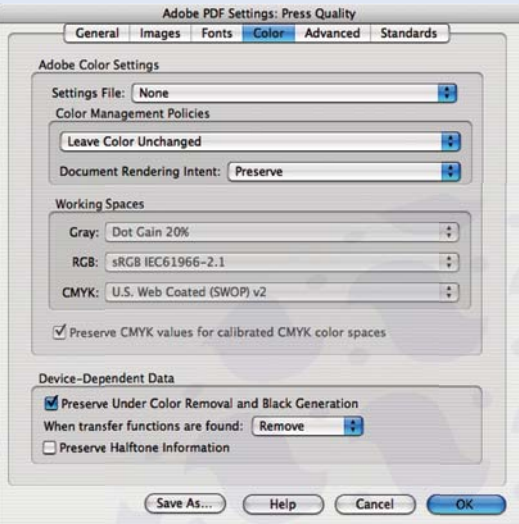
Although the following screen shots settings are from Acrobat Distiller 8, but they apply to Distiller 5 or later. Please be aware that there may be slight difference on selections between different Acrobat Distiller versions.



- General**
- *Select: Acrobat 5 (PDF 1.4) Compatibility
 - *Object Level Compression : "Off"
 - *Auto-Rotate Page: "Off"
 - *Select Binding: Left
 - *Select Resolution: 2400
 - *Select: All Pages
 - *Select: Embed Thumbnails
 - *Width: 612 or Width: 8.5
 - *Height: 792 or Height: 11
 - *Select Units: Points or Select Units: Inches

- Images**
- Color Images:**
- *Select Sampling: "Off"
 - *Pixels per Inch: 300
 - *Select Compression: ZIP
- Grayscale Images:**
- *Select Sampling: "Off"
 - *Pixels per Inch: 300
 - *Select Compression: ZIP
- Monochrome Images:**
- *Select Sampling: "Off"
 - *Pixels per Inch: 1200
 - *Select Compression: CCITT Group 4
 - *Select Anti-Alias to Gray: "Off"

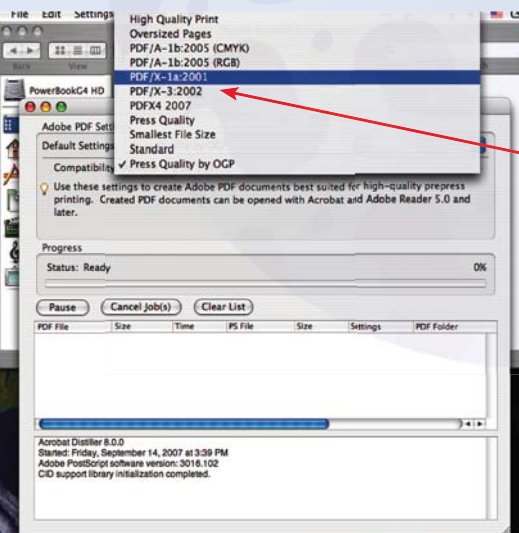
- Fonts**
- *Select: Embed All Fonts
 - *Subset Embedded Fonts When Percent of Characters Used in Less Than: 100%
 - *Select When Embedding Fails: Cancel Job
 - *Remove All Fonts on the Always Embed and Never Embed lists



- Color**
- *Select Setting File: None
 - *Select Color Management Policies: Leave Color Unchanged
 - *Select Document Rendering Intent: Preserve
 - *All Working Spaces Options should be Grayed-Out
 - *Select: Preserve Under Color Removal and Black Generation
 - *Deselect: Preserve Halftone Information

- Advanced**
- *Please Select and Deselect as per above diagram

- Standards**
- *Select Compliance Standard: None
 - *All other options should be grayed out



Distill Postscript files

If you have an automated Distill by using watched folders, just launch Distiller and it will begin creating a PDF from the PostScript file you just created.

Note:

We do not require submission of files that confirm to the PDF/X standards. Instead, create a new setting as above instructions.